

# we're hosting an event **STEELDAY2009**

## American Welding Company

American Welding Company  
689 Hopkins Hill Road West Greenwich, RI 02817 Phone: 401-397-9155 Email: sales@awsteel.com  
Websites by New England Multimedia | 888-409-1099

### Fabricator Tours: American Welding Company

Witness the heart of the structural steel supply chain by visiting a steel fabricator near you on SteelDay 2009.

Learn how off-site, controlled conditions coupled with BIM and advanced machinery ensure a consistently high-quality product and reduce or eliminate errors and fixes at the job site.

American Welding Company, an AISC certified company, has been serving the east coast structural steel construction market for over 50 years and is the largest structural steel fabrication facility in Rhode Island.

Attendees to this event will experience a modern 36,000 square foot manufacturing facility on 22 acres of land. Investment in over 2-million dollars of state-of-the-art CNC steel fabricating and handling equipment ensures projects of all sizes and types can be fabricated on time, accurately.

All necessary safety gear will be provided and closed toe shoes are required. Attire is casual, jeans are welcome. Brunch will be served during the event.

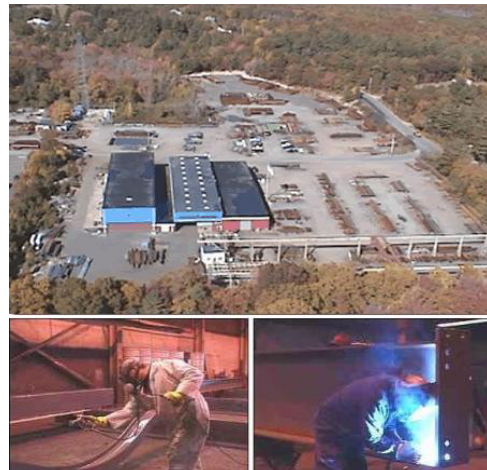
Find out more about American Welding Company at [www.awsteel.com](http://www.awsteel.com)

Date: September 18, 2009  
Time: 10am - 12pm  
Event Type: Fabricator Tour and Brunch

Location: 689 Hopkins Hill Road  
West Greenwich, RI 02817  
(Exit 6A off I-95)

Of interest to: Architects, Engineers,  
Contractors and Students

*Attendees will learn about the processes steel fabricators go through from receiving the steel through to shipping steel to the job site. Participants are encouraged to ask questions throughout.*



### About Structural Steel Fabricators

Steel fabricators typically have the closest relationships with the design and contracting community. They receive the steel contract from the general contractor and then orchestrate the supply chain to fulfill the contract. There are around 2,500 fabricators in the U.S., serving every corner of the nation.

One of the major advantages of building with structural steel is the quality of the fabrication process. Off-site fabrication allows for a quality controlled environment unaffected by climate and weather changes, or by adverse site conditions. The nature of the material allows it to be fabricated to very close tolerances and at every stage of fabrication the steel is inspected to help guarantee a quality product and eliminate mistakes and costly site work.

Fabrication itself consists of tasks such as cutting, drilling, punching, shearing, welding, piece assembly and assembly of complex geometry and trusses. Fabricators have invested in advanced computer-controlled (CNC) machinery and material-handling equipment to perform the more common tasks such as cutting to length, drilling and shape burning. The CNC machines are extremely fast and efficient and are fed automatically from the BIM systems used by the detailers.

To register for this event: [www.SteelDay.org](http://www.SteelDay.org)

To request more details about this event, e-mail: [moor@aisc.org](mailto:moor@aisc.org) or [holik@aisc.org](mailto:holik@aisc.org).  
or American Welding Company directly:  
Eric Greene ([eric@awsteel.com](mailto:eric@awsteel.com))  
401.397.9155

